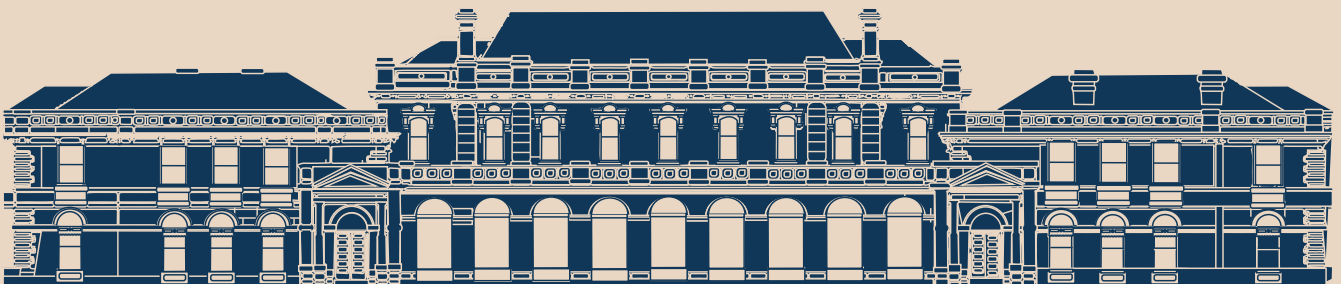




Information Booklet for Additional needs Teachers and Students



Produced by the Parliamentary Education Office, Parliament of Western Australia.

Note to teachers and education assistants about this publication

The Parliamentary Education Office appreciates how much time and effort goes into organising an excursion and our goal is to support you in your efforts as much as possible. We have an ever increasing range of resources available on-line to support your teaching about Parliament and its processes.

The following picture-based book is designed to be a resource to use with any of your students who may struggle when their routine is broken. The pictures and simple text will allow an adult to go through the book and show the child exactly what they will see and experience during their visit to Parliament House.

We would welcome any feedback as to the usefulness of this resource, or how it could be improved to better suit your needs.



Hello, and welcome to Parliament House

The building has two different looking sides



Front



Back

When your group arrives for the tour



The view from the front of Parliament House



Friendly Officers keep everyone safe

Ground Floor (Forrest Foyer)



This is the entrance to the Forrest Foyer where your tour will begin



← All the adults will have to wear one of these

Ground Floor (Forrest Foyer)



You will see this in the Forrest Foyer



Let's go upstairs



1st Floor (Edith Cowan Foyer)



Your group will see this painting in the Edith Cowan Foyer.



1st Floor (Edith Cowan Foyer)

Your group will also see these photos in the Edith Cowan Foyer.



1st Floor (Legislative Assembly)



You will follow your Parliamentary Educator to the Legislative Assembly (the Lower House) on non-sitting days.



1st Floor (Legislative Assembly)

Your group may notice this item (The Mace) in the Legislative Assembly



Your group will see the Legislative Assembly from the public gallery on sitting days

1st Floor (Legislative Council)



You will follow your Parliamentary Educator to the Legislative Council (the Upper House) on non-sitting days.



1st Floor (Legislative Council)

You may notice this item (The Black Rod) in the Legislative Council



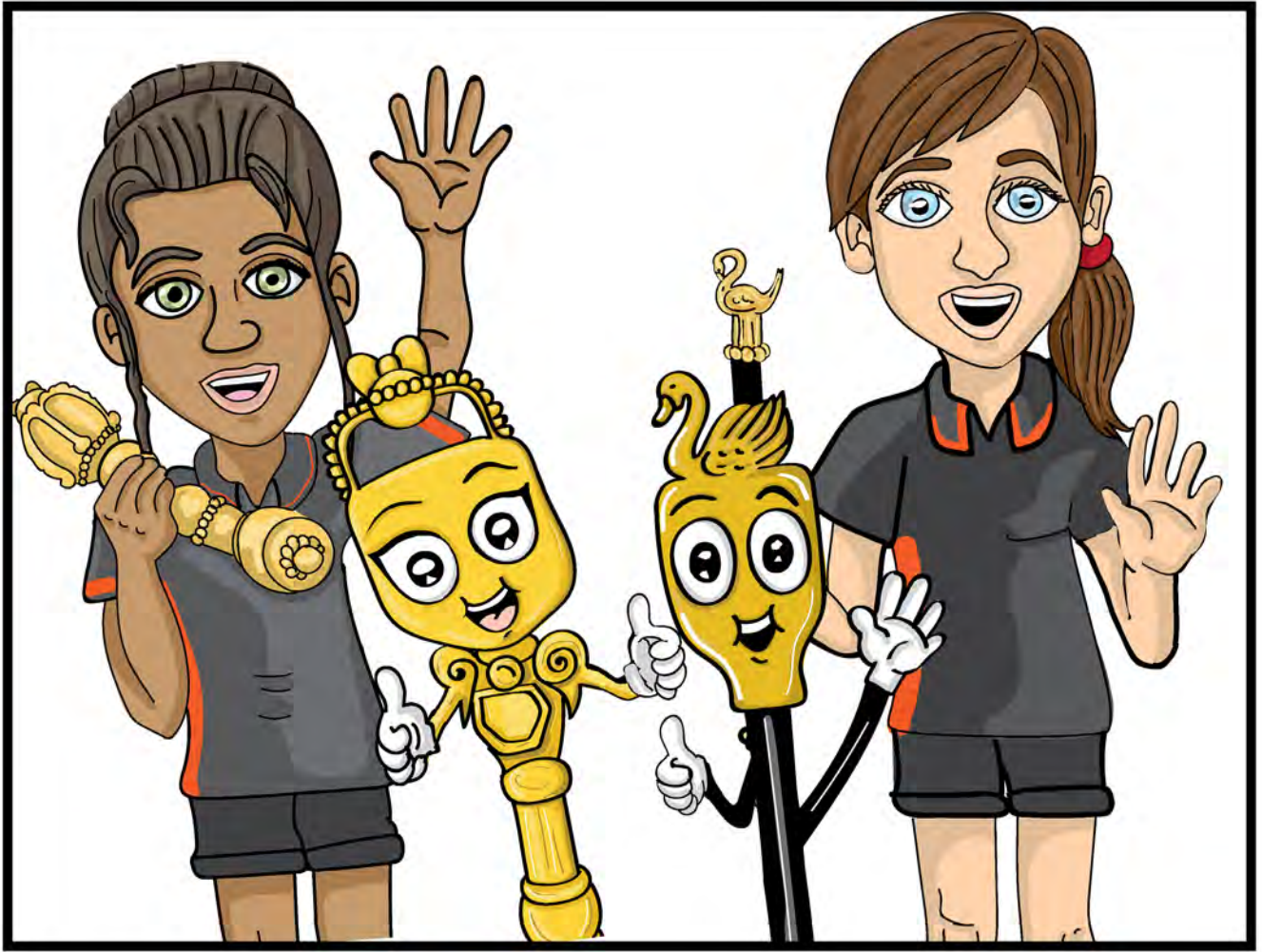
Your group will see the Legislative Council from the public gallery on sitting days

2nd Floor (Aboriginal Peoples Gallery)



Your Parliamentary Educator will show you the Aboriginal Peoples' Gallery on sitting days





We hope you enjoyed your visit
to Parliament House